



King George Close, Cheltenham, GL53 7RF

£900 Per Calendar Month



2



1



1



D



£900 Per Calendar Month

# King George Close

Cheltenham, GL53 7RF

- Ground Floor Flat
- Recently Refurbished
- Two Double Bedrooms
- Close to Cox's Meadow

Two double bedroom ground floor flat, with picturesque views near Cox's Meadow.

Recently refurbished throughout the accommodation benefits from a private entrance and comprises a large lounge with views over the duck pond.

Large fitted kitchen with space for appliances.

Two double bedrooms, the master with built in wardrobes.

Spacious bathroom with shower over the bath.

The property is double glazed throughout and heated with eclectic panels and night storage heaters.

Outside there is a small communal patio and a designated parking space.

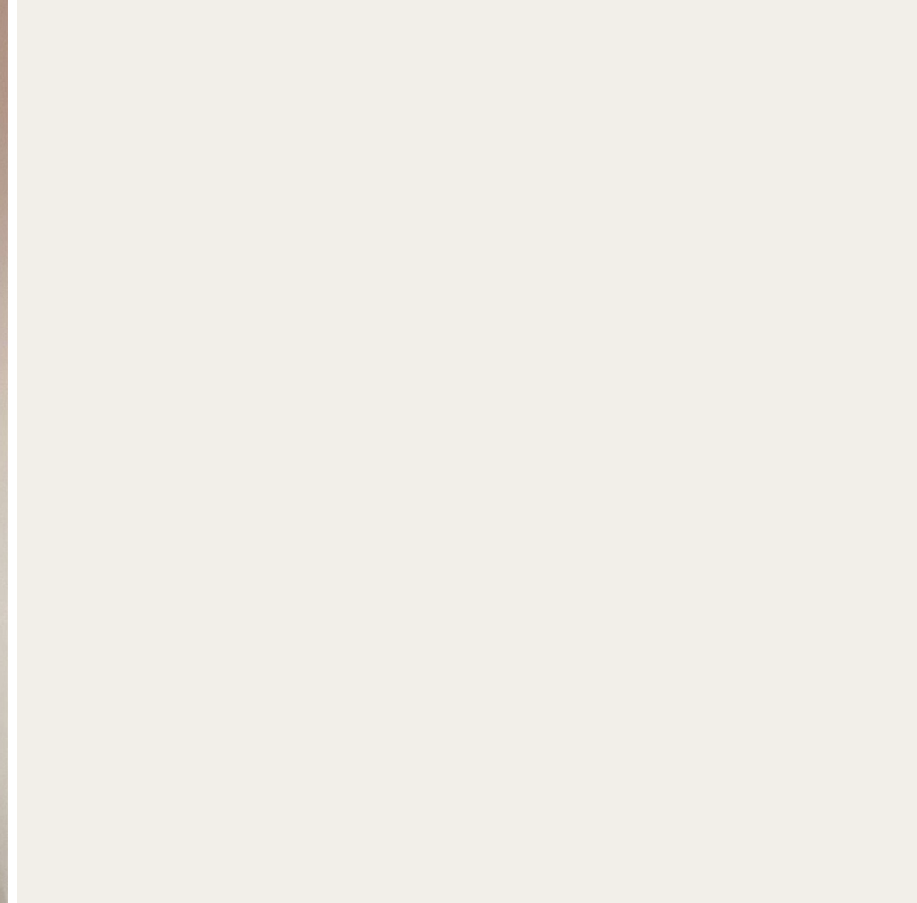
The property is situated in a quiet cul de sac, close to local amenities.

Council Tax B

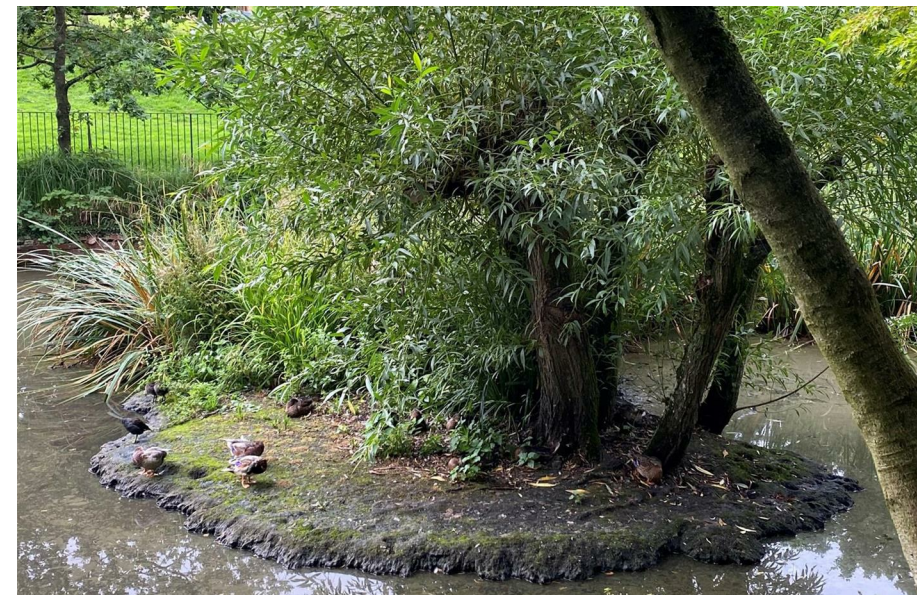
Available NOW

Small pets considered.



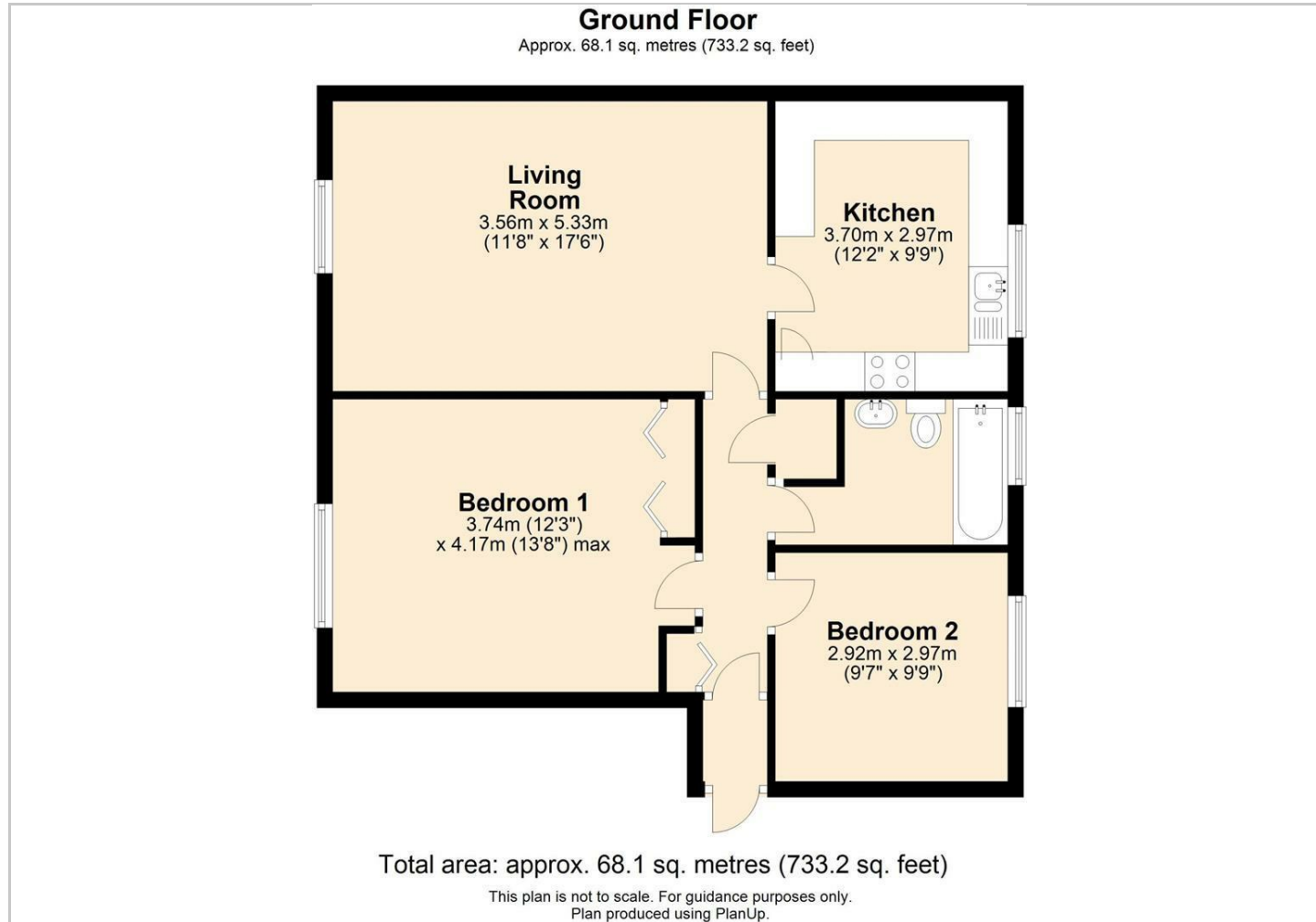


Directions





## Floor Plans



## Viewing

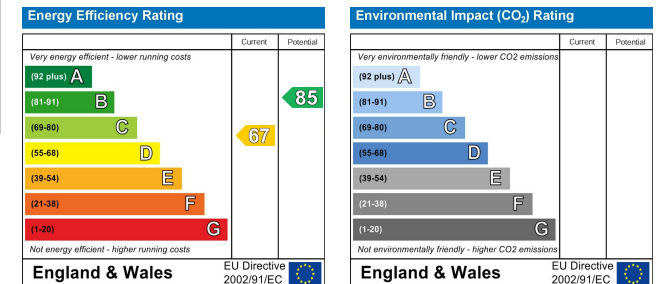
Please contact our HMT Office on 01242 521322 if you wish to arrange a viewing appointment for this property or require further information.

2 Crescent Terrace, Cheltenham, Gloucestershire, GL50 3PE  
Tel: 01242 521322 Email: info@hmt.co.uk www.hmt.co.uk

## Location Map



## Energy Performance Graph



The particulars are set out as a general outline only for the guidance of intended purchasers or lessees, and do not constitute, any part of a contract. Nothing in these particulars shall be deemed to be a statement that the property is in good structural condition or otherwise nor that any of the services, appliances, equipment or facilities are in good working order. Purchasers should satisfy themselves of this prior to purchasing.